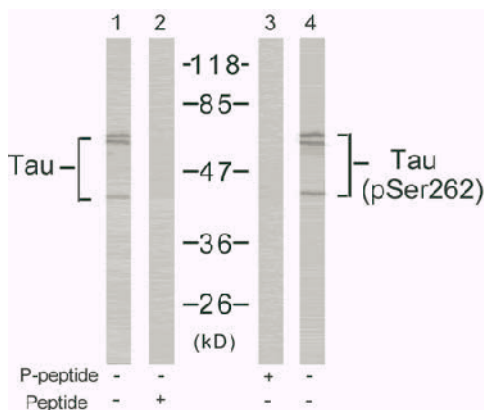


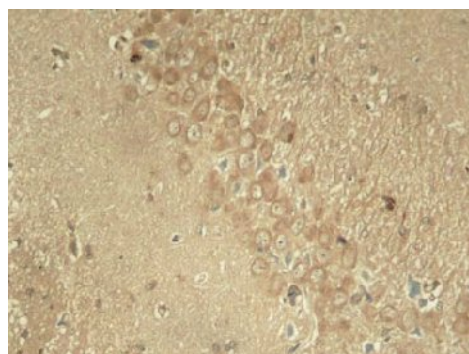
Tau(Phospho-Ser262) Antibody

Catalog No.	65432
Product Name	Tau(Phospho-Ser262) Antibody
Size	50ug, 100ug
Concentration	1 mg/ml
Specificity	Detects endogenous levels of Tau only when phosphorylated at serine 262.
Reactivity	Human, Mouse, Rat
Immunogen	Synthesized phosphopeptide derived from human Tau around the phosphorylation site of serine 262 (I-G-S ^P -T-E).
Applications	WB: 1/500 – 1/1000; IHC: 1/50 – 1/100; IF: 1/100 – 1/200
Swiss-Prot No.	P10636 (Human)
Host Species	Rabbit
Clonality	Polyclonal
Isotype	IgG
Buffer	Phosphate buffered saline (without Mg ²⁺ and Ca ²⁺), pH 7.4, 240mM NaCl, 0.02% sodium azide and 50% glycerol.
Storage	-20°C for one year. Avoid freeze/thaw cycles.
Purification	Affinity-purified from rabbit antiserum by affinity-chromatography using epitope-specific phosphopeptide. The antibody against non-phosphopeptide was removed by chromatography using non-phosphopeptide corresponding to the phosphorylation site.

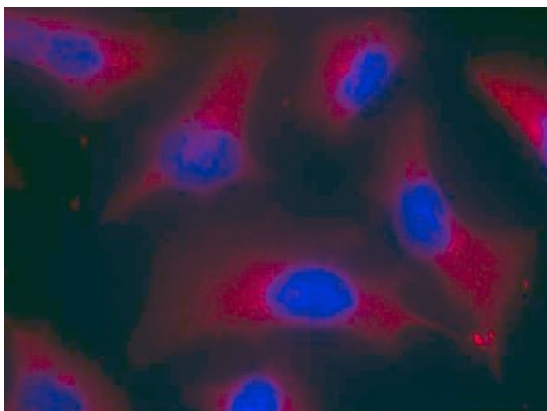
Images



Western blot analysis of extracts from mouse brain tissue using Tau (Ab-262) antibody (Lane 1 and 2) and Tau (phospho-Ser262) antibody (Lane 3 and 4).



Immunohistochemical analysis of paraffin-embedded rat hippocampal region tissue from a model with Alzheimer's Disease using Tau (phospho-Ser262) antibody.



Immunofluorescence staining of methanol-fixed HeLa cells using Tau (phospho- Ser262) antibody.

For Research Use Only