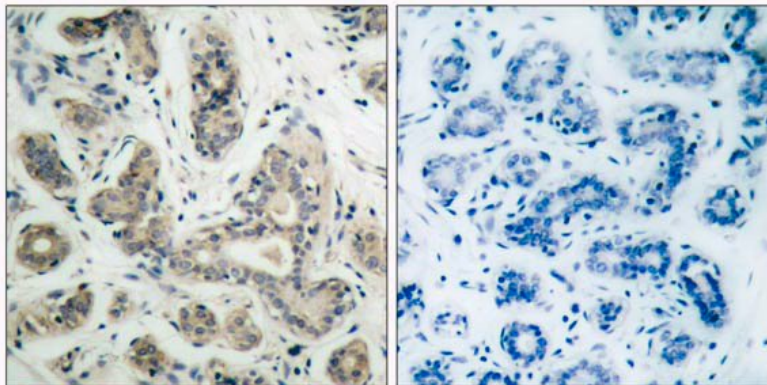


BAD (Phospho-Ser136) Antibody

Catalog No.	65389
Product Name	BAD (Phospho-Ser136) Antibody
Size	50ug, 100ug
Concentration	1 mg/ml
Specificity	Detects endogenous levels of BAD only when phosphorylated at Serine 136.
Reactivity	Human, Mouse, Rat
Immunogen	Synthesized phosphopeptide derived from mouse BAD around the phosphorylation site of serine136 (S-R-S ^P -A-P).
Applications	IHC: 1/50 – 1/100
Swiss-Prot No.	Q92934 (Human), Q61337 (Mouse), O35147 (Rat)
Host Species	Rabbit
Clonality	Polyclonal
Isotype	IgG
Storage	-20°C for one year. Avoid freeze / thaw cycles.
Purification	Affinity-purified from rabbit antiserum by affinity-chromatography using epitope-specific phosphopeptide. The antibody against non-phosphopeptide was removed by chromatography using non-phosphopeptide corresponding to the phosphorylation site.

Images

Immunohistochemical analysis of paraffin-embedded human breast carcinoma tissue using BAD (phospho-Ser136) antibody.

Left: p-peptide –
Right: p-peptide +

For Research Use Only