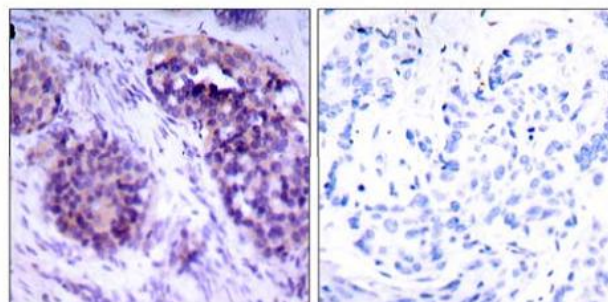
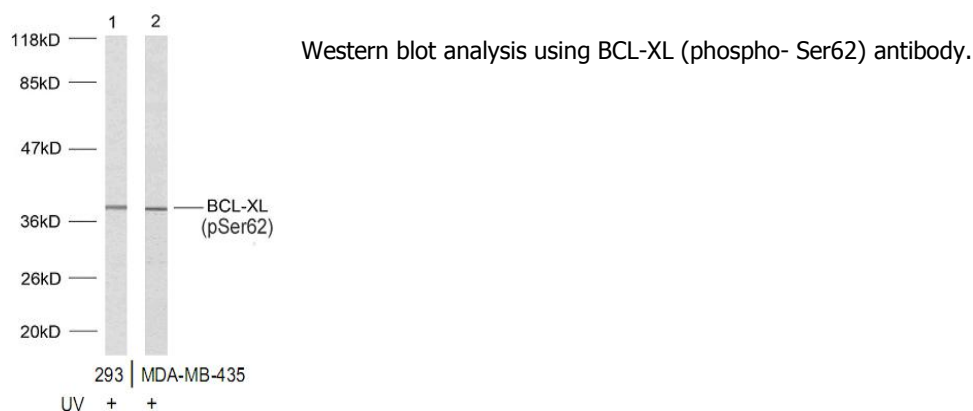


BCL-XL (Phospho-Ser62) Antibody

Catalog No.	65387
Product Name	BCL-XL (Phospho-Ser62) Antibody
Size	50ug, 100ug
Concentration	1 mg/ml
Specificity	Detects endogenous levels of BCL-XL only when phosphorylated at serine 62.
Reactivity	Human, Mouse, Rat
Immunogen	Synthesized phosphopeptide derived from human BCL-2 around the phosphorylation site of serine 70 (R-T-S ^P -P-L).
Tested Applications	WB: 1/500 – 1/1000; IHC: 1/50 – 1/100
Entrez Gene No.	598 (Human); 12048 (Mouse); 24888 (Rat)
Swiss-Prot No.	Q5TE63 (Human); Q07817 (Human); Q64373 (Mouse); Q52KS0 (Rat)
Host Species	Rabbit
Clonality	Polyclonal
Isotype	IgG
Storage	-20°C for one year. Avoid freeze/thaw cycles.
Purification	Affinity purified from rabbit antiserum by affinity chromatography using epitope specific phosphopeptide. The antibody against non phosphopeptide was removed by chromatography using non phosphopeptide corresponding to the phosphorylation site.

Images



Immunohistochemical analysis of paraffin-embedded human breast carcinoma tissue using BCL-XL (phospho-Ser62) antibody.

P-Peptide - +

For Research Use Only