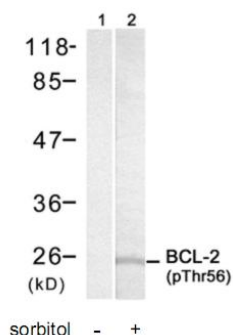


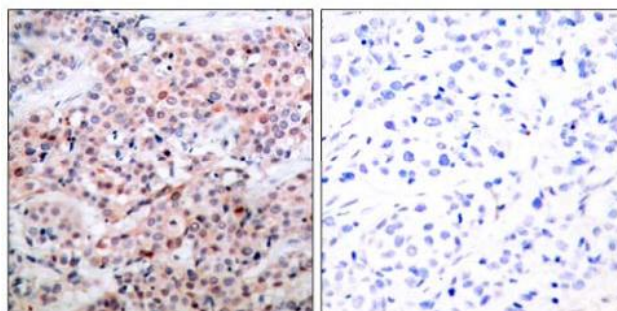
BCL-2 (Phospho-Thr56) Antibody

Catalog No.	65385
Product Name	BCL-2 (Phospho-Thr56) Antibody
Size	50ug, 100ug
Concentration	1 mg/ml
Specificity	Detects endogenous levels of BCL-2 only when phosphorylated at threonine 56.
Reactivity	Human
Immunogen	Synthesized phosphopeptide derived from human BCL-2 around the phosphorylation site of threonine 56 (G-H-T ^P -P-H).
Tested Applications	WB: 1/500 – 1/1000; ELISA
Entrez Gene No.	596 (Human)
Swiss-Prot No.	P10415 (Human)
Host Species	Rabbit
Clonality	Polyclonal
Isotype	IgG
Storage	-20°C for one year. Avoid freeze/thaw cycles.
Purification	Affinity purified from rabbit antiserum by affinity chromatography using epitope specific phosphopeptide. The antibody against non phosphopeptide was removed by chromatography using non phosphopeptide corresponding to the phosphorylation site.

Images



Western blot analysis of extracts from MDA435 cells treated with sorbitol (0.4M, 30min) using BCL-2 (phospho-Thr56) antibody.



Immunohistochemical analysis of paraffin-embedded human breast carcinoma tissue, using BCL-2 (phospho-Thr56) antibody.

For Research Use Only