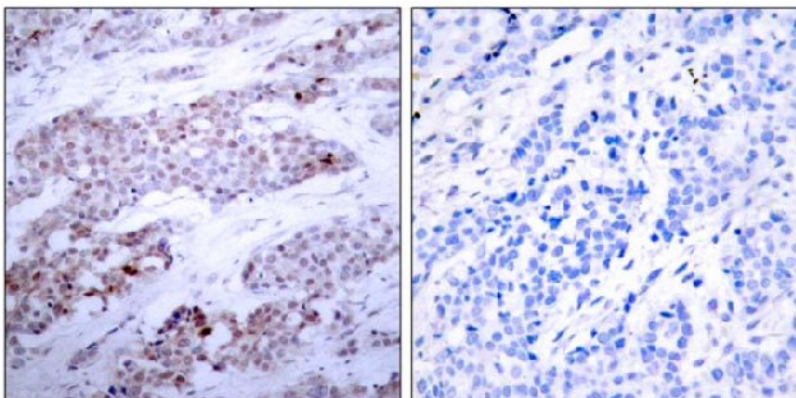


ATF4 (Phospho-Ser245) Antibody

Catalog No.	65374
Product Name	ATF4 (Phospho-Ser245) Antibody
Size	50ug, 100ug
Concentration	1 mg/ml
Specificity	Detects endogenous levels of ATF4 only when phosphorylated at serine 245.
Reactivity	Human
Immunogen	Synthesized phosphopeptide derived from human ATF4 around the phosphorylation site of serine 245 (N-R-S ^P -L-P).
Applications	IHC: 1/50 – 1/100
Swiss-Prot No.	P18848 (Human)
Host Species	Rabbit
Clonality	Polyclonal
Isotype	IgG
Storage	-20°C for one year. Avoid freeze / thaw cycles.
Purification	Affinity-purified from rabbit antiserum by affinity-chromatography using epitope-specific phosphopeptide. The antibody against non-phosphopeptide was removed by chromatography using non-phosphopeptide corresponding to the phosphorylation site.

Images

P-Peptide

-

+

Immunohistochemical analysis of paraffin-embedded human breast carcinoma tissue, using ATF4 (phospho-Ser245) antibody.

For Research Use Only