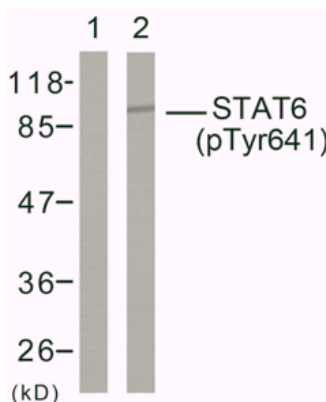


STAT6 (Phospho-Tyr641) Antibody

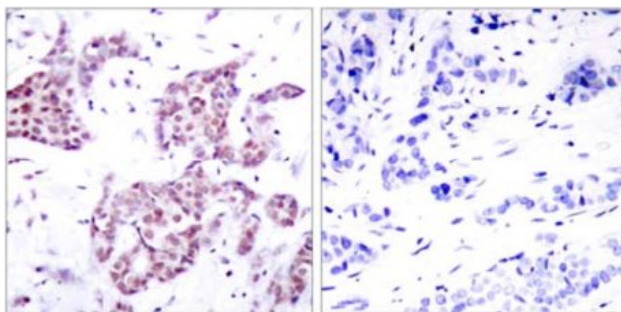
Catalog No.	65371
Product Name	STAT6 (Phospho-Tyr641) Antibody
Size	50ug, 100ug
Concentration	1 mg/ml
Specificity	Detects endogenous levels of STAT6 only when phosphorylated at tyrosine 641.
Reactivity	Human
Immunogen	Synthesized phosphopeptide derived from human STAT6 around the phosphorylation site of tyrosine 641 (R-G-Y ^P -V-P).
Applications	WB: 1/500 – 1/1000; IHC: 1/50 – 1/100
Swiss-Prot No.	P42226 (Human)
Host Species	Rabbit
Clonality	Polyclonal
Isotype	IgG
Buffer	Phosphate buffered saline (without Mg ²⁺ and Ca ²⁺), pH 7.4, 150mM NaCl, 0.02% sodium azide and 50% glycerol.
Storage	-20°C for one year. Avoid freeze/thaw cycles.
Purification	Affinity-purified from rabbit antiserum by affinity-chromatography using epitope-specific phosphopeptide. The antibody against non-phosphopeptide was removed by chromatography using non-phosphopeptide corresponding to the phosphorylation site.

Images



Western blot analysis of extracts from HeLa cells using STAT6 (Phospho-Tyr641) antibody.

Lane 1: IL-4 -
Lane 2: IL-4 +



Immunohistochemical analysis of paraffin-embedded human breast carcinoma tissue using STAT6 (Phospho-Tyr641) antibody.

Left: P-peptide -
Right: P-peptide +

For Research Use Only