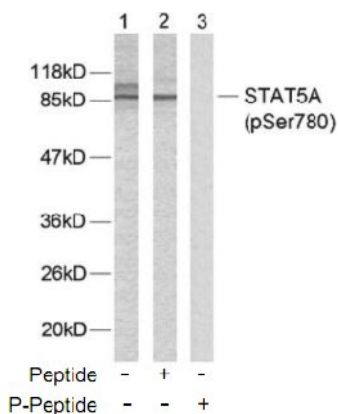


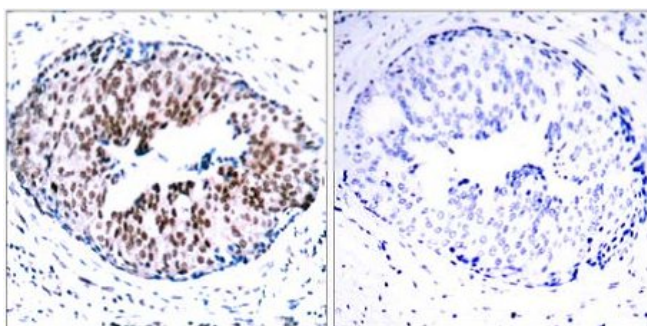
STAT5A (Phospho-Ser780) Antibody

Catalog No.	65370
Product Name	STAT5A (Phospho-Ser780) Antibody
Size	50ug, 100ug
Concentration	1 mg/ml
Specificity	Detects endogenous levels of STAT5A only when phosphorylated at serine 780.
Reactivity	Human, Mouse, Rat
Immunogen	Synthesized phosphopeptide derived from human STAT5A around the phosphorylation site of serine 780 (R-L-S ^P -P-P).
Applications	WB: 1/500 – 1/1000; IHC: 1/50 – 1/100
Swiss-Prot No.	P42229 (Human)
Host Species	Rabbit
Clonality	Polyclonal
Isotype	IgG
Buffer	Phosphate buffered saline (without Mg ²⁺ and Ca ²⁺), pH 7.4, 150mM NaCl, 0.02% sodium azide and 50% glycerol.
Storage	-20°C for one year. Avoid freeze/thaw cycles.
Purification	Affinity-purified from rabbit antiserum by affinity-chromatography using epitope-specific phosphopeptide. The antibody against non-phosphopeptide was removed by chromatography using non-phosphopeptide corresponding to the phosphorylation site.

Images



Western blot analysis of extracts from HeLa cells using STAT5A (Phospho-Ser780) antibody.



Immunohistochemical analysis of paraffin-embedded human breast carcinoma tissue using STAT5A (Phospho-Ser780) antibody.

Left: P-peptide –
Right: P-peptide +

For Research Use Only