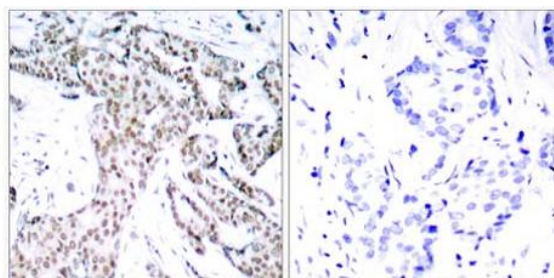
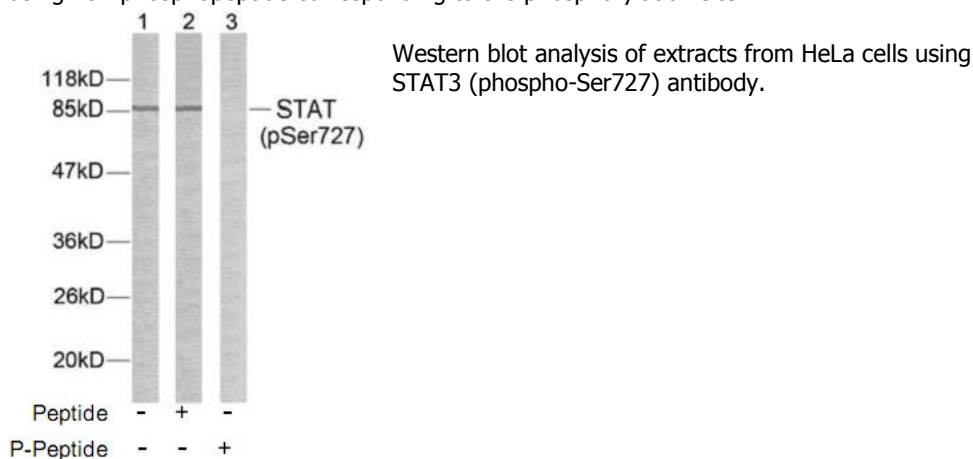


STAT3 (Phospho-Ser727) Antibody

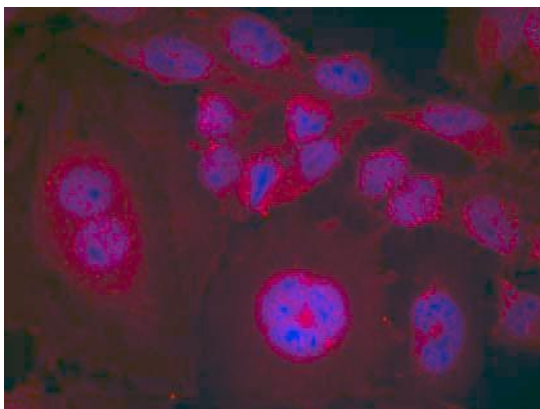
Catalog No.	65367
Product Name	STAT3 (Phospho-Ser727) Antibody
Size	50ug, 100ug
Concentration	1 mg/ml
Specificity	Detects endogenous levels of STAT3 only when phosphorylated at serine 727.
Reactivity	Human, Mouse, Rat
Immunogen	Synthesized phosphopeptide derived from human STAT3 around the phosphorylation site of serine 727 (P-M-S ^P -P-R).
Applications	WB: 1/500 – 1/1000; IHC: 1/50 – 1/100; IF: 1/100 – 1/200
Entrez Gene No.	6774 (Human); 20848 (Mouse); 25125 (Rat)
Swiss-Prot No.	P40763 (Human); P42227 (Mouse); P52631 (Rat)
Host Species	Rabbit
Clonality	Polyclonal
Isotype	IgG
Buffer	Phosphate buffered saline (without Mg ²⁺ and Ca ²⁺), pH 7.4, 150mM NaCl, 0.02% sodium azide and 50% glycerol.
Storage	-20°C for one year. Avoid freeze/thaw cycles.
Purification	Affinity-purified from rabbit antiserum by affinity-chromatography using epitope-specific phosphopeptide. The antibody against non-phosphopeptide was removed by chromatography using non-phosphopeptide corresponding to the phosphorylation site.

Images



Immunohistochemical analysis of paraffin-embedded human breast carcinoma tissue using STAT3 (phospho-Ser727) antibody.

P-Peptide - +



Immunofluorescence staining of methanol-fixed HeLa cells using STAT3 (phospho-Ser727) antibody.

For Research Use Only