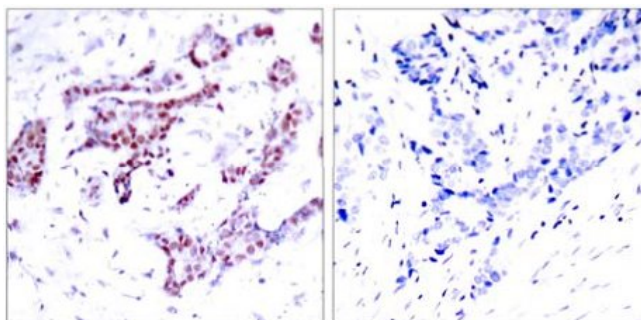
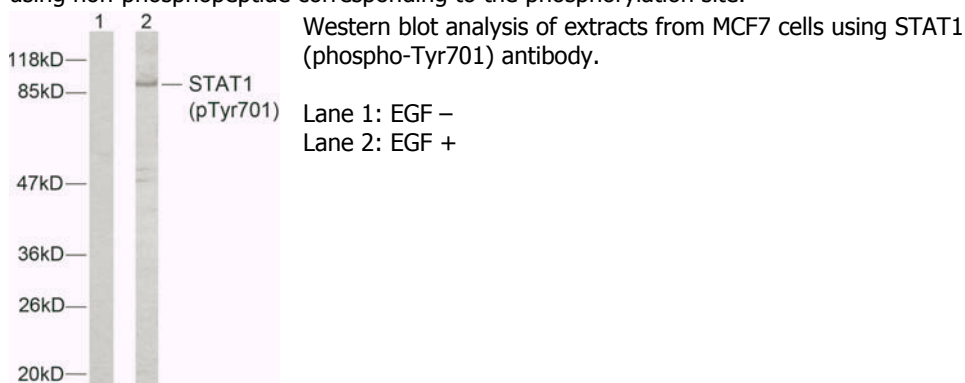


**STAT1 (Phospho-Tyr701) Antibody**

**Catalog No.** 65365  
**Product Name** STAT1 (Phospho-Tyr701) Antibody  
**Size** 50ug, 100ug  
**Concentration** 1 mg/ml  
**Specificity** Detects endogenous levels of STAT1 only when phosphorylated at tyrosine 701.  
**Reactivity** Human, Mouse, Rat  
**Immunogen** Synthesized phosphopeptide derived from human STAT1 around the phosphorylation site of tyrosine 701(T-G-Y<sup>P</sup>-I-K).  
**Applications** WB: 1/500 – 1/1000; IHC: 1/50 – 1/100  
**Entrez Gene No.** 6772 (Human); 20846 (Mouse); 25124 (Rat)  
**Swiss-Prot No.** P42224 (Human); Q3TW11 (Mouse); Q6P6Q7 (Rat)  
**Host Species** Rabbit  
**Clonality** Polyclonal  
**Isotype** IgG  
**Buffer** Phosphate buffered saline (without Mg<sup>2+</sup> and Ca<sup>2+</sup>), pH 7.4, 150mM NaCl, 0.02% sodium azide and 50% glycerol.  
**Storage** -20°C for one year. Avoid freeze/thaw cycles.

**Purification** Affinity-purified from rabbit antiserum by affinity-chromatography using epitope-specific phosphopeptide. The antibody against non-phosphopeptide was removed by chromatography using non-phosphopeptide corresponding to the phosphorylation site.

**Images**



Immunohistochemical analysis of paraffin-embedded human breast carcinoma tissue using STAT1 (phospho-Tyr701) antibody.

Left: P-peptide -  
 Right: P-peptide +

**For Research Use Only**