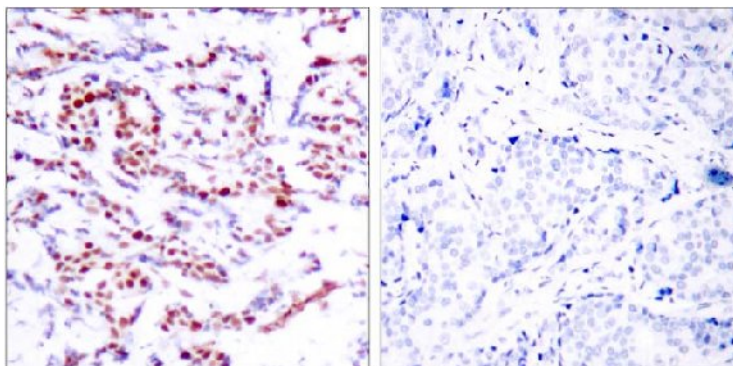


ATF-2 (Phospho-Ser112 or 94) Antibody

Catalog No.	65354
Product Name	ATF-2 (Phospho-Ser112 or 94) Antibody
Size	50ug, 100ug
Concentration	1 mg/ml
Specificity	Detects endogenous levels of ATF-2 only when phosphorylated at serine 112 or 94.
Reactivity	Human, Mouse, Rat
Immunogen	Synthesized phosphopeptide derived from human ATF-2 around the phosphorylation site of serine 112 or 94 (D-L-S ^P -P-L).
Applications	IHC: 1/50 – 1/100
Swiss-Prot No.	P15336 (Human); P16951 (Mouse); Q00969 (Rat)
Host Species	Rabbit
Clonality	Polyclonal
Isotype	IgG
Storage	-20°C for one year. Avoid freeze / thaw cycles.
Purification	Affinity-purified from rabbit antiserum by affinity-chromatography using epitope-specific phosphopeptide. The antibody against non-phosphopeptide was removed by chromatography using non-phosphopeptide corresponding to the phosphorylation site.

Images

P-Peptide

-

+

Immunohistochemical analysis of paraffin-embedded human breast carcinoma tissue using ATF-2 (phospho-Ser112 or 94)antibody.

For Research Use Only