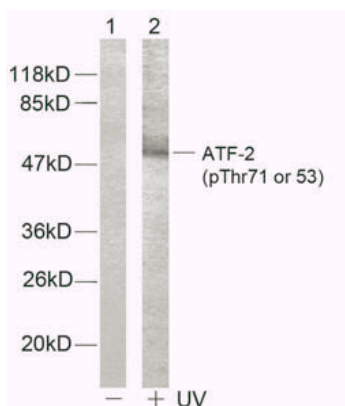
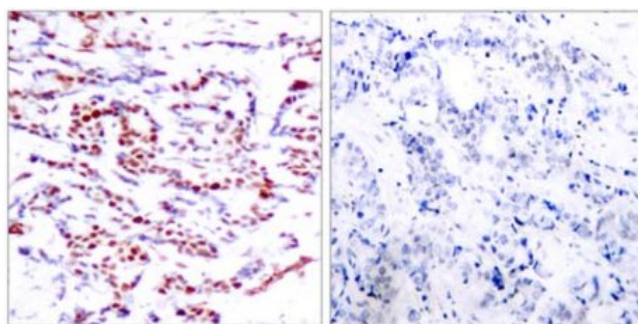


**ATF-2 (Phospho-Thr71 or 53) Antibody**

<b>Catalog No.</b>	65352
<b>Product Name</b>	ATF-2 (Phospho-Thr71 or 53) Antibody
<b>Size</b>	50ug, 100ug
<b>Concentration</b>	1 mg/ml
<b>Specificity</b>	Detects endogenous levels of ATF-2 only when phosphorylated at threonine 71 or 53.
<b>Reactivity</b>	Human, Mouse, Rat
<b>Immunogen</b>	Synthesized phosphopeptide derived from human ATF-2 around the phosphorylation site of threonine 71 or 53 (T-P-T <sup>P</sup> -P-T).
<b>Applications</b>	WB: 1/500 – 1/1000; IHC: 1/50 – 1/100
<b>Swiss-Prot No.</b>	P15336 (Human); P16951 (Mouse); Q00969 (Rat)
<b>Host Species</b>	Rabbit
<b>Clonality</b>	Polyclonal
<b>Isotype</b>	IgG
<b>Storage</b>	-20°C for one year. Avoid freeze / thaw cycles.
<b>Purification</b>	Affinity-purified from rabbit antiserum by affinity-chromatography using epitope-specific phosphopeptide. The antibody against non-phosphopeptide was removed by chromatography using non-phosphopeptide corresponding to the phosphorylation site.

**Images**

Western blot analysis of extract from HeLa cells, using ATF-2 (phospho-Thr71 or 53) antibody.



Immunohistochemical analysis of paraffin-embedded human breast carcinoma tissue using ATF-2 (phospho-Thr71 or 53) antibody.

**For Research Use Only**